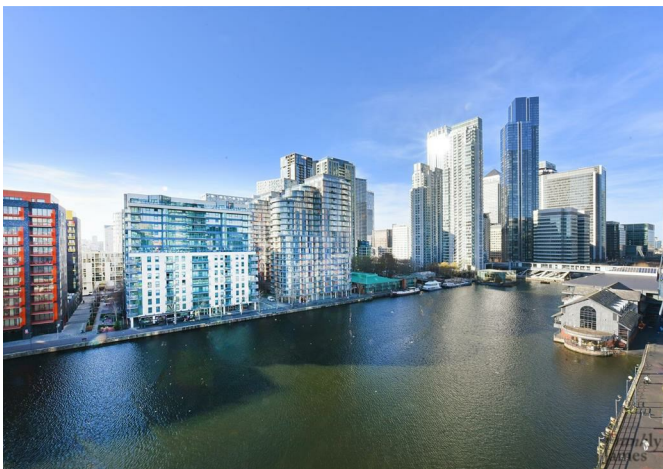


Franklyn James



12 Baltimore Wharf, E14 9FG
£1,850 Per Calendar Month

Franklyn James



12 Baltimore Wharf, E14 9FG

£1,850 Per Calendar Month

- Furnished
- Extremely desirable Baltimore Wharf development
- 6th Floor Luxury Studio
- Studio
- Juliet balcony
- Residents' gym
- 24 hour concierge
- Swimming pool
- Abundance of natural light
- Moments from Canary Wharf and Crossharbour DLR

EPC rating- B
Tax band- D

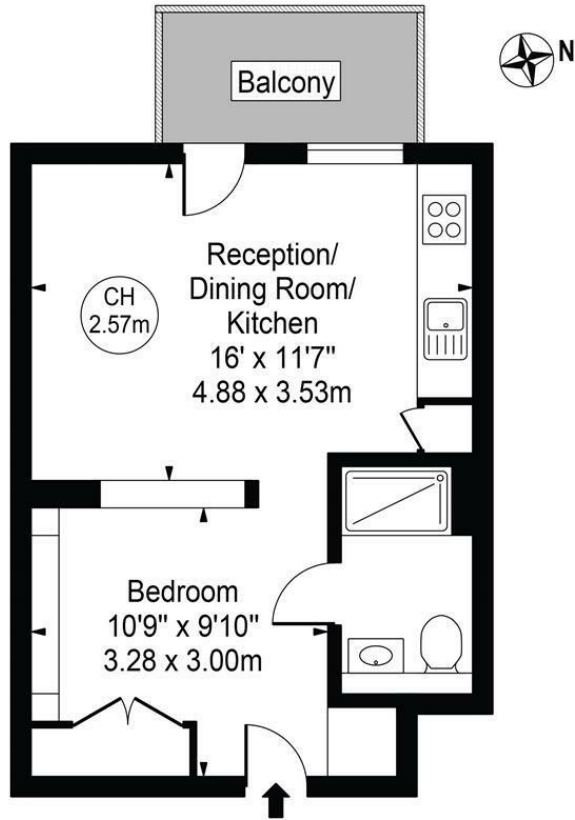


A contemporary studio suite apartment within the extremely desirable Baltimore Wharf development which boasts 24 hour concierge, resident's gym and swimming pool.

This stunning studio suite apartment has been furnished to a great standard and is positioned on the sixth floor. Baltimore Wharf is superbly located being within moments of a selection of shops, bars and restaurants in Canary Wharf as well as the DLR and Jubilee Line stations.

Baltimore Wharf

Approx. Gross Internal Area 346 Sq Ft - 32.14 Sq M



Ninth Floor

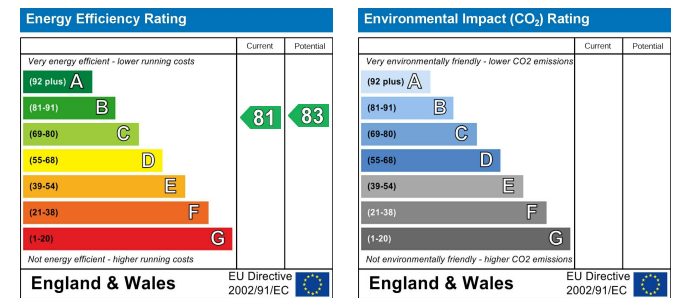
For Illustration Purposes Only - Not To Scale

This floor plan should be used as a general outline for guidance only and does not constitute in whole or in part an offer or contract. Any intending purchaser or lessee should satisfy themselves by inspection, searches, enquiries and full survey as to the correctness of each statement. Any areas, measurements or distances quoted are approximate and should not be used to value a property or be the basis of any sale or let.

Area Map



Energy Performance Graph



These particulars, whilst believed to be accurate are set out as a general outline only for guidance and do not constitute any part of an offer or contract. Intending purchasers should not rely on them as statements of representation of fact, but must satisfy themselves by inspection or otherwise as to their accuracy. No person in this firm's employment has the authority to make or give any representation or warranty in respect of the property.